

Pilot Peak & Rock Creek Ride Journal

Saturday, September 5, 2010

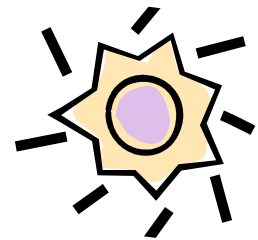
Ride Leader: Carl Bloomquist

Story: Carl Bloomquist

We had an awesome ride today in the Idaho City area. Most everyone met at Trudy's for breakfast before heading up to Mores Creek summit and the trailhead. We ended up with nine machines (eight ATVs & one side by side), people of all ages and experience levels.



We headed up to Pilot Peak first and took in the view of, well, a sizable chunk of central Idaho. From there, we ventured into the Lowman Ranger District and began our serpentine journey to Rock Creek. We ate lunch on the ridge overlooking the Rock Creek canyon, with a view of Pilot Peak and the Lowman area. We finally worked our way down to the creek, and almost immediately began working our way back up again. After a bit, we ran out of good road and started on the narrow trail down to the mine on Rock Creek. The trail up out of the creek (again) was tricky and we worked everyone through one at a time, but everyone made it okay.



Once out of the canyon, we intersected our path from the morning, and headed for the trucks. We covered about 54 miles and had a great time. We had a good group, everyone watched out for each other and we had no incidents or problems.